

# Turtle Watch Annual Report

30 November 2025

Prepared for:

Dan Rowe, Executive Director  
Bay County Tourist Development Council  
17001 Panama City Beach Parkway  
Panama City Beach, Florida 32417

Prepared by:

Angela Barros, Director  
Panama City Beach Turtle Watch, Inc.  
[angela.pcbtw@gmail.com](mailto:angela.pcbtw@gmail.com)  
<https://turtlewatch.org/>

**Summary.** This report provides results for the 2025 sea turtle nesting season on Panama City Beach. The information is submitted by Panama City Beach Turtle Watch, Inc. (aka Turtle Watch) to fulfill requirements of our contract with the Bay County Tourist Development Council. Season highlights include:

- Our third best nesting season since 1991 with a total of 49 nests (42 loggerhead nests and 7 green nests). Our highest season remains at 57 nests in 2017.
- Record hatchling production of 3803 turtles from 4943 eggs, giving an overall emergence success of 77%, the most since 2015's record of 3359. Another 43 live hatchlings were found during excavations, resulting in a total of 3,846 hatchlings this season. The absence of named storms creating high surf contributed to the good hatchling production.
- Artificial lights disoriented 70% of hatchlings emerging from nests at night this season. Condo exterior lights, urban glow, and streetlights were the main contributors. New construction along Front Beach Road is utilizing wildlife-friendly streetlights, which should help reduce future disorientation incidents from this light source.
- Record year for tagging nesting females as four loggerheads and two greens were tagged with passive tags as part of a research study. Three of these were tagged during nighttime Leave No Trace (LNT) enforcement. Two turtles tagged this season both returned weeks later and were confirmed repeat nesters by reading their tags when encountered at Bid-a-Wee Beach, located near the center of the survey area.
- Twenty-nine (29) strandings occurred within the survey area, 23 of which involved live turtles accidentally hooked or entangled in fishing gear near the two Gulf piers or along the beach. Gulf World Marine Institute responded to the live stranding incidents.
- Only one adult turtle was obstructed by beach furniture while attempting to nest at night, continuing a positive trend of fewer obstruction incidents due to improved regulations within the City of Panama City Beach.
- Posted an educational sign on all marked nests containing tips for safe turtle encounters and a direct phone number for reaching Turtle Watch volunteers. Callers were able to notify us of 12 hatching nests, allowing volunteers to respond and recover disoriented hatchlings, thereby reducing mortality.
- Continued our long running educational outreach program with school visits and displays at local events. Volunteers conducted outreach on 10 occasions during the season, reaching over 600 participants. Also, over 2,500 residents and tourists attended public nest excavations, with many more attending virtually through our Facebook page.

Major results are summarized below. Additional reports have been submitted to the Florida Fish and Wildlife Conservation Commission (FWC) to fulfill requirements of our State Permits 038, 271 and 286. These documents are available upon request.

**Survey Area and Nourishment Activities.** Turtle Watch monitors sea turtle activity along 17.5 miles of Gulf beach between St. Andrews State Park and Camp Helen State Park. Portions of the survey area were nourished in 2021-22 with sand pumped onto the beach from an offshore source. Last year completed our post-nourishment monitoring period with no further nourishment procedures required for 2025.

**Nest Identification and Relocation.** Morning surveys to identify fresh sea turtle crawls were performed from May 1 to September 15. The surveys were done on all-terrain vehicles, and nests were identified solely from the physical evidence left in the sand by the nesting turtle (body pit and sand mound created by flippers). Beginning on September 16 and continuing through November 12, surveys were limited to checks of existing nests which were monitored daily until they hatched and/or were excavated. This year, we were not restricted from relocating nests as our three-year post-nourishment stipulation ended in 2024. We relocated two nests at the time they were found, one in the path of a storm drain and one that was below the mean high tide line. Both relocated nests produced hatchlings.

**Nesting and Hatchling Production.** We found 49 nests and 29 non-nesting emergences (false crawls) during 2025. Forty-two (42) nests and 22 false crawls were made by threatened loggerheads, and seven nests and seven false crawls made by threatened greens. Locations of nests and false crawls are shown in Figure 1, a map of the survey area with each column of symbols representing activity on a 0.5-mile section of beach (35 sections). Tables 1-3 provide detailed information on each nest and false crawl, including the species, location, date found, date hatched, and nest excavation results. Key results are as follows:

- Combined hatchling emergence was 3803 from 4943 eggs for an overall emergence success of 77% (49 evaluated nests, Figure 2). Of the combined figures, 3024 loggerhead hatchlings emerged from 4051 eggs (75%). Average loggerhead nest size was 101 eggs (range 79 - 148, 40 nests, excluding one partial washout and one with no eggs, Table 3) with the average incubation period being 64 days (range 58 to 72, 36 nests, Figure 3). Of the remaining nests, 779 green hatchlings emerged from 892 eggs (87%). Average green nest size was 127 eggs (range 73-143, 7 nests, Table 3), with the average incubation period being 66 days (range 56 - 77, 7 nests, Figure 3).
- Six nesting turtles (4 loggerhead, 2 green) were tagged during nighttime LNT enforcement (3) or based on a call from beachgoers (3). When tags were not already present on the encountered turtles, they were installed as a metal tag on each front flipper and/or an electronic PIT tag injected into the left shoulder. Two turtles (1 loggerhead, 1 green) that were previously tagged this season on our beach were observed on our beach again (an in-season recapture), confirmed by the tags installed. The in-season recaptured turtles were both observed on Bid-a-Wee Beach where they also each laid at least two nests this season. The green was observed on the beach three times, the initial tagging while nesting followed weeks later by a false crawl and nest in the same night. This was a record-breaking tagging and recapture season for us. Previously, we tagged five turtles in 2002 (before nighttime Leave No Trace enforcement) and only experienced a turtle recapture in five prior seasons.
- No missed nests were reported by surveyors or beachgoers. However, one crawl identified as a nest by surveyors turned out to be a false crawl.
- No named storms flooded nests this season. However, in August high surf from an unnamed storm caused a partial nest washout, with only eight eggs remaining when volunteers arrived to assess the nest and relocate the remaining eggs to the dunes (the nest produced no hatchlings). While nine other nests encountered washover, eight of those resulted in some hatchling emergence success and only one washed over nest had no emergence success.

**Beachfront Lighting Affecting Nesting and Hatchling Turtles.** Artificial lights from beachfront development continue to pose a serious threat to sea turtles on our urban beach, causing substantial numbers of hatchlings to become disoriented when emerging from nests at night. We submitted disorientation data to FWC's online system and provided a separate summary report with more on this subject, including procedures to monitor nests and estimate lighting effects on nesting and hatchling turtles. Key results are as follows:

- Lights disoriented 2576 of 3694 hatchlings or 70% of those emerging at night from 42 nests.
- Condo exterior lights were the largest contributor at 21%, followed by urban glow and streetlights which contributed 20% and 16%, respectively (Figure 4).
- Adult loggerheads were disoriented at four nests and one false crawl (Table 4).
- Turtle Watch reached out to Panama City Beach officials to urge the use of wildlife-friendly streetlights associated with the Community Redevelopment Agency (CRA) effort on Front Beach Road. We also submitted comments to the Florida Department of Environmental Protection on a proposed lighting plan for the upcoming CRA Segment 4.2. We received confirmation from FWC that the CRA project will use a FWC-approved streetlight fixture with an amber light source and appropriate shielding.

**Beach Furniture Affecting Nesting Turtles.** We documented only one incident where an adult turtle encountered obstructions while attempting to nest (Table 5). This good news continues a positive trend within the City limits, thanks to an updated Leave No Trace (LNT) ordinance requiring nightly storage of vendor chairs at the base of the dune. The obstructed nesting incident did not occur on the municipal beach.

**Stranding Incidents.** Twenty-nine (29) turtles stranded within the survey area between May and October (Table 6). They consisted of 16 loggerheads, 4 greens, and 9 Kemp's ridleys. Six were found dead on the beach or in the water. The beach cleaning contractor, Coastal Parasail, removed dead turtles from the beach as part of their beach cleaning duties. Gulf World Marine Institute (GWMI) responded to 23 turtles, found alive along the beach or near the two Gulf piers, with embedded hooks or entangled in fishing gear. These turtles were taken to GWMI for treatment and rehabilitation. More hooked or entangled turtles were secured by pier staff, beach safety and local fishermen this year at both Gulf piers due to coordination and educational efforts made by GWMI and Turtle Watch.

**Seabird and Shorebird Nesting.** Turtle Watch surveyors coordinated with FWC personnel who posted two locations within the survey area at Bid-a-Wee Beach and Santa Monica Beach to protect seabirds and shorebirds. At peak, both sites had least tern and black skimmer nesting colonies. However, the entire Santa Monica colony abandoned their site with dog tracks visible throughout the site and determined to be the cause of that site failure. The Bid-a-Wee colony produced both least tern and black skimmer chicks. As in prior years, the greatest impacts to the colonies involved human and vehicle impacts.

**Beach Cleaning and LNT Coordination.** Turtle Watch surveyors notified Coastal Parasail each morning when surveys were done and nests marked so that beach cleaning could begin.

Additionally, Turtle Watch provided Wildlife Observers (WO) as part of enforcement of the LNT ordinances performed nightly between May 12 and September 15, removing tents and other personal gear covered by the ordinances. Crews received training from Turtle Watch representatives on nighttime operations to minimize impacts on beach wildlife. The WO drove a gator (mule) while watching for nesting and hatchling turtles and other wildlife, including birds. The vehicle stopped, lights were turned off, and crews were advised to halt operations when turtles were observed. During 2025, WOs encountered five nesting turtles. They checked each turtle for tags and either tagged the turtle or contacted an authorized volunteer to perform the tagging. WOs also found three loggerhead nests and five false crawls (3 loggerhead, 2 green) where the turtle had already returned to the water. They coordinated with volunteers who responded to mark the nests. Additionally, WOs arrived at seven nests to find hatchlings emerging and four nests with disoriented hatchlings on the beach. They also encountered one hatchling straggler from a nest and a hatchling washback with each being transferred to GWMI for assessment. When hatchlings were encountered, WOs contacted Turtle Watch volunteers operating under MTP-271 for hatchling recovery and release activities to be performed before continuing with the nightly beach cleaning operations.

**Education.** For the second year, we added an educational sign to all marked nests in addition to the standard FWC sign. Referring to Figure 5, the sign has tips on protecting sea turtles and includes a phone number to report hatchlings or nest disturbance directly to Turtle Watch volunteers. During 2025, we received 12 calls from bystanders witnessing a hatchling emergence at our marked nests. Volunteers responded to these reports and collected disoriented hatchlings at eight of these nests which reduced hatchling mortality (the other four were not disoriented). We received no reports of nest vandalism or poaching this season, aside from a minor incident of stakes knocked down at one nest. Regarding outreach activities, volunteers conducted events on 10 occasions reaching over 600 participants, and five off-season events reached over 300 participants. Volunteers setup a display and presented to elementary and middle school students, home school groups, and visitors at Landmark Condo. They also had a display for locals and visitors to view and discuss while attending the International Beach Cleanup, Earth Day and That Sea Turtle gymnastics meet. Finally, public nest excavations were performed at 33 nests following hatching. In addition 2,354 people who attended in person, many more joined virtually for many excavations streamed live on our Facebook page, Panama City Beach Turtle Watch, which has 48K+ Facebook followers. Excavations of the other 16 nests were performed unannounced due to logistics, but 322 beachgoers that approached during the excavation received the same excavation experience as our public excavations.

## **Distribution**

1. Robbin Trindell, [robbin.trindell@myfwc.com](mailto:robbin.trindell@myfwc.com), FWC Tallahassee
2. Meghan Koperski, [meghan.koperski@myfwc.com](mailto:meghan.koperski@myfwc.com), FWC Tequesta
3. Kristin Halley, [kristin.halley@myfwc.com](mailto:kristin.halley@myfwc.com), FWC Tallahassee
4. Beth Mongiovi, [mary.mongiovi@myfwc.com](mailto:mary.mongiovi@myfwc.com), FWRI St Petersburg
5. Nick Vitale, [nicholas.vitale@myfwc.com](mailto:nicholas.vitale@myfwc.com), FWC Panama City
6. Patty Kelly, [patricia\\_kelly@fws.gov](mailto:patricia_kelly@fws.gov), USFWS, Panama City
7. Caroline Walker, [caroline\\_walker@fws.gov](mailto:caroline_walker@fws.gov), USFWS Panama City

8. Margaret Lamont, [mlamont@usgs.gov](mailto:mlamont@usgs.gov), USGS Gainesville
9. Lisa Armbruster, [larmbruster@sustainablebeaches.com](mailto:larmbruster@sustainablebeaches.com), Sustainable Beaches
10. Lauren Albrittain, [lauren@gulfworldmarineinstitute.org](mailto:lauren@gulfworldmarineinstitute.org), GWMI Panama City Beach
11. Cecilia James, [cjames@baycountyfl.gov](mailto:cjames@baycountyfl.gov), Bay County Code Enforcement
12. Lanie Smith, [lanie.smith@pcbfl.gov](mailto:lanie.smith@pcbfl.gov), PCB Code Enforcement
13. Mel Leonard, [mel.leonard@pcbfl.gov](mailto:mel.leonard@pcbfl.gov), PCB Building Department
14. Drew Whitman, [drew.whitman@pcbfl.gov](mailto:drew.whitman@pcbfl.gov), PCB City Manager
15. Norman Capra, [nfcapra@gmail.com](mailto:nfcapra@gmail.com), Audubon Bay County

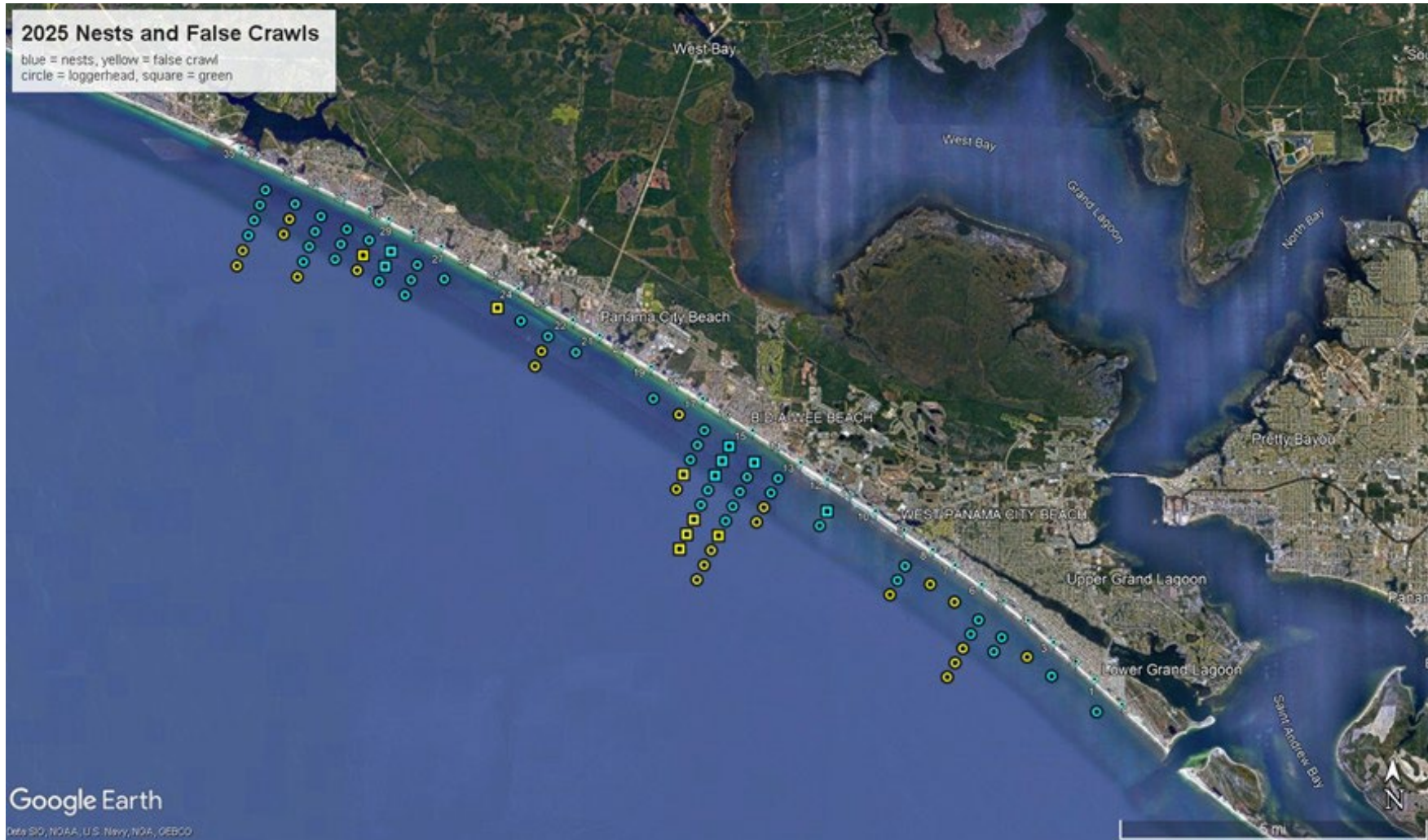
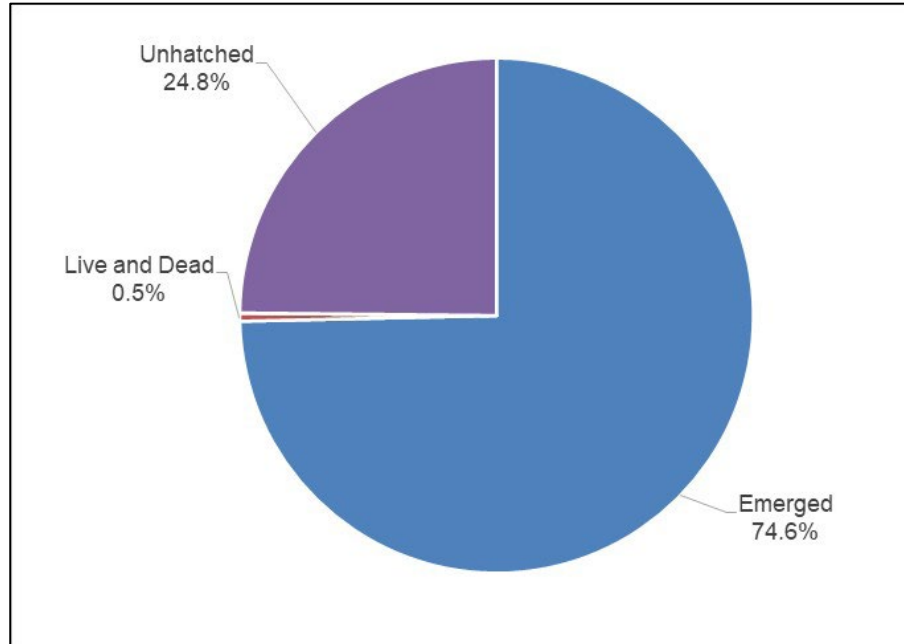
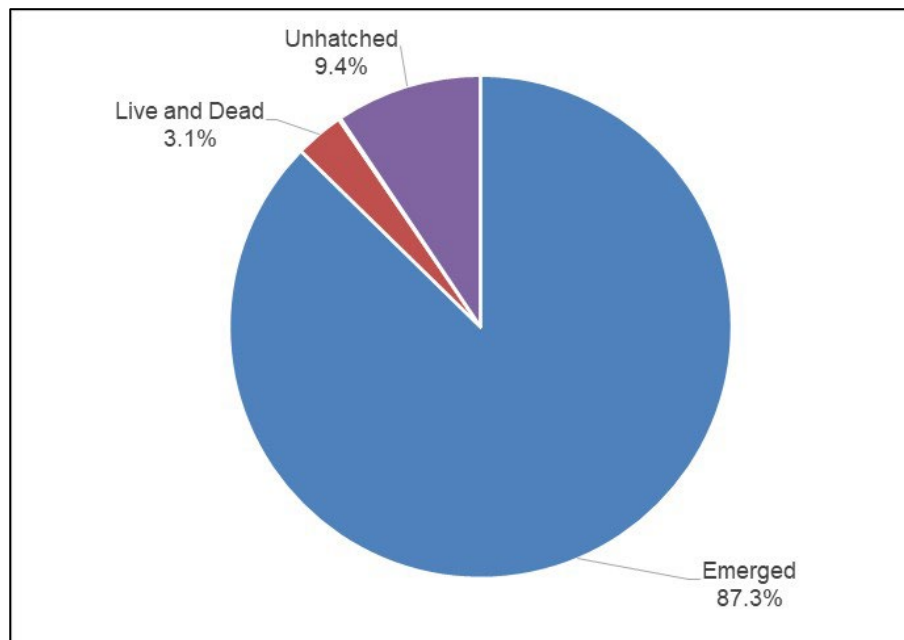


Figure 1. Sea turtle nest and false crawl locations on Panama City Beach in 2025. Each column of symbols represents crawls on 1/2-mile beach segment (blue nests, yellow false crawls, circles loggerhead, squares green turtle).



(a) Loggerhead (41 nests)



(b) Green (7 nests)

Figure 2. Emergence success for loggerhead and green nests on Panama City Beach in 2025. Contents are unhatched eggs, live and dead hatchlings found in nest, pipped eggs where hatchling partially broke free of shell, and emerged hatchlings that escaped the nest. Note that pipped eggs are not shown due to small numbers (see Table 3).

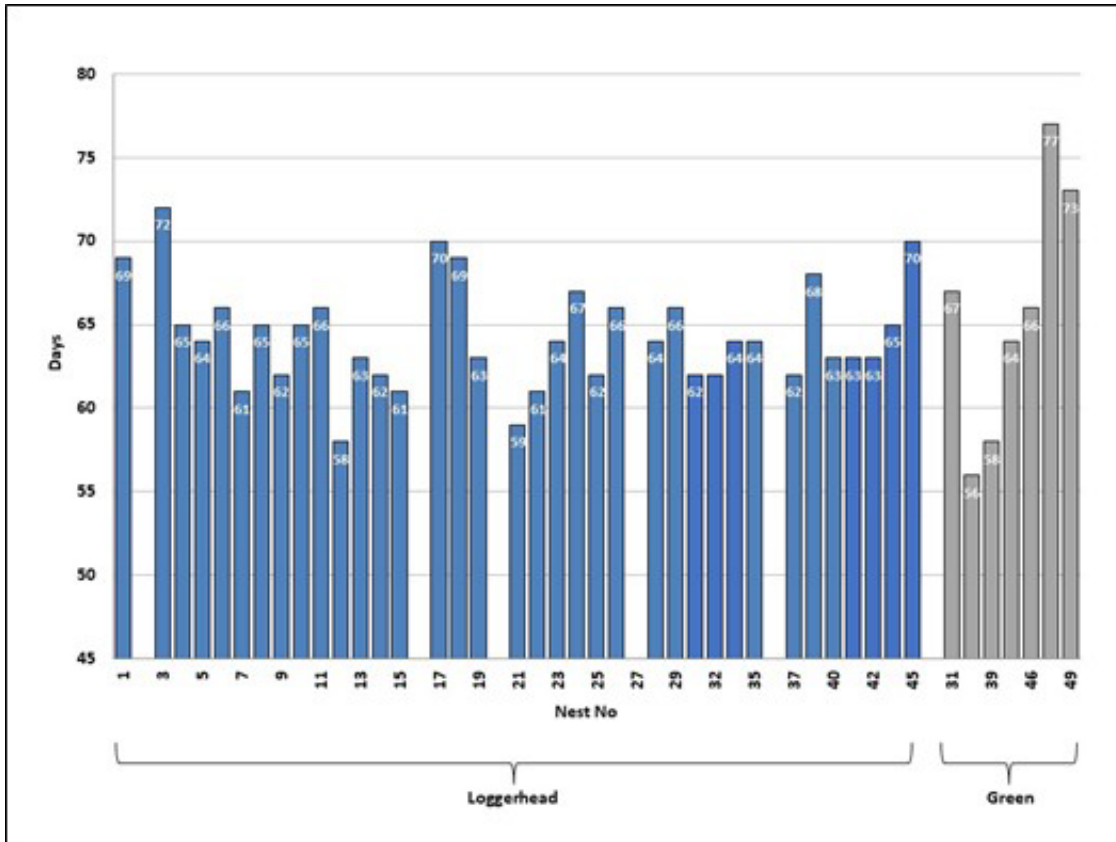


Figure 3. Nest incubation periods on Panama City Beach in 2025 (36 loggerhead nests, 7 green nests). Blanks indicate nests that failed to hatch or had unknown incubation periods.

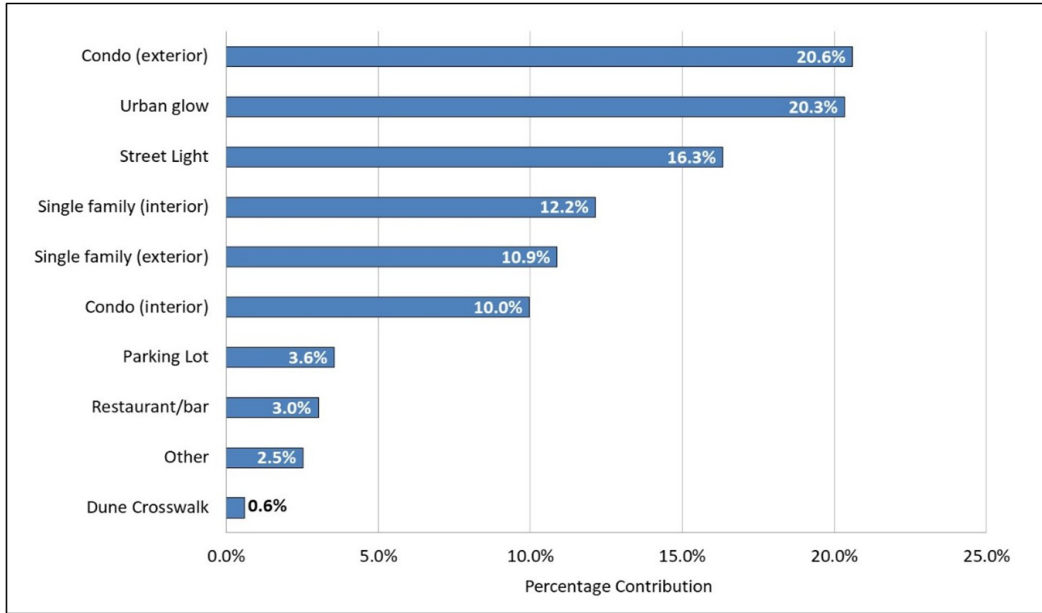


Figure 4. Lights contributing to hatchling disorientation incidents on Panama City Beach in 2025 (28 loggerhead nests, 5 green nests).



Figure 5. Educational and FWC signs used to mark sea turtle nests on Panama City Beach in 2025.

Table 1. Sea turtle nest locations and hatching information on Panama City Beach in 2025.  
Cc loggerhead, Cm green, UNK unknown

Nest No	Species	Location	In Situ or Relocated	Date Laid	Date Hatched	Incubation (days)	Total Eggs	Turtles Emerged	Latitude	Longitude
1	Cc	House, 406 Beachside Dr, Carillon Beach	In Situ	21-May	28-Jul	69	105	94	30.261026	-85.976222
2	Cc	House, 21000 Front Beach Rd	In Situ	23-May	UNK	UNK	0	0	30.248637	-85.946694
3	Cc	House, 13213 Oleander Dr	In Situ	24-May	3-Aug	72	83	79	30.196695	-85.843918
4	Cc	House, 21511 Front Beach Rd	In Situ	25-May	28-Jul	65	91	88	30.251938	-85.953745
5	Cc	House, 20639 Front Beach Rd	In Situ	26-May	28-Jul	64	93	85	30.245767	-85.940385
6	Cc	House, 20627 Front Beach Rd	In Situ	27-May	31-Jul	66	96	88	30.245540	-85.939970
7	Cc	Landmark Condo, 17501 Front Beach Rd	In Situ	30-May	29-Jul	61	128	109	30.228150	-85.903228
8	Cc	Shoreline Villas, 23007 Front Beach Rd	In Situ	30-May	2-Aug	65	87	83	30.259721	-85.973228
9	Cc	Hampton Inn & Suites, 15505 Front Beach Rd	In Situ	31-May	31-Jul	62	97	88	30.210777	-85.869443
10	Cc	House, 13105 Oleander Dr	In Situ	5-Jun	8-Aug	65	85	78	30.195607	-85.841868
11	Cc	House, 14208 Front Beach Rd	In Situ	5-Jun	9-Aug	66	91	87	30.202068	-85.853614
12	Cc	Moonspinner Condo, 4425 Thomas Dr	In Situ	5-Jun	1-Aug	58	148	131	30.134163	-85.746870
13	Cc	Vacant lot, 22209 Front Beach Rd	In Situ	6-Jun	7-Aug	63	133	116	30.255360	-85.962721
14	Cc	House, 288 Beachside Dr, Carillon Beach	In Situ	6-Jun	6-Aug	62	79	77	30.263959	-85.983875
15	Cc	Boardwalk Beach Hotel and Convention Center, 9600 S Thomas Dr	Relocated	7-Jun	7-Aug	61	116	114	30.171290	-85.800100
16	Cc	House, 13211 Oleander Dr	In Situ	9-Jun	UNK	UNK	108	0	30.196522	-85.843672
17	Cc	House, 22421 Front Beach Rd	In Situ	11-Jun	19-Aug	70	102	2	30.257169	-85.966909
18	Cc	House, 8011 Surf Dr	In Situ	13-Jun	20-Aug	69	92	32	30.160651	-85.782617
19	Cc	House, 286 Beachside Dr, Carillon Beach	In Situ	14-Jun	15-Aug	63	79	70	30.264105	-85.984149
20	Cc	House, 14202 Front Beach Rd	In Situ	15-Jun	UNK	UNK	84	0	30.201812	-85.853186

21	Cc	House, 5625 Gulf Dr	In Situ	15-Jun	12-Aug	59	122	116	30.144839	-85.760241
22	Cc	Beachcomber, 17101 Front Beach Rd	In Situ	16-Jun	15-Aug	61	133	127	30.221500	-85.890057
23	Cc	Days Inn, 12818 Front Beach Rd	In Situ	17-Jun	19-Aug	64	91	89	30.193612	-85.838289
24	Cc	House, 6619 Gulf Drive	In Situ	17-Jun	22-Aug	67	90	86	30.152962	-85.771165
25	Cc	House, 13401 Oleander Dr	In Situ	18-Jun	18-Aug	62	92	73	30.197482	-85.845304
26	Cc	House, 21304 Front Beach Rd	Relocated	21-Jun	25-Aug	66	87	38	30.250430	-85.950850
27	Cc	Townhouse, 17631 Front Beach	In Situ	22-Jun	UNK	UNK	103	0	30.230173	-85.907564
28	Cc	House, 278 Beachside Dr, Carillon	In Situ	22-Jun	25-Aug	64	92	71	30.264249	-85.984566
29	Cc	House, 20611 Front Beach Rd.	In Situ	28-Jun	1-Sep	66	113	60	30.245242	-85.939642
30	Cc	House, 13902 Front Beach Rd	In Situ	30-Jun	30-Aug	62	92	91	30.200374	-85.850533
31	Cm	House, 264 Belaire Dr	In Situ	2-Jul	6-Sep	67	73	40	30.248592	-85.945949
32	Cc	Edgewater Beach Resort, 11757 Front Beach Rd	In Situ	3-Jul	2-Sep	62	110	95	30.185147	-85.823812
33	Cc	House, 22105 Front Beach Rd	In Situ	3-Jul	4-Sep	64	110	100	30.254960	-85.961692
34	Cm	House, 21018 Front Beach Rd	In Situ	8-Jul	1-Sep	56	130	110	30.249182	-85.947077
35	Cc	House, 9610 Beach Blvd	In Situ	9-Jul	10-Sep	64	101	97	30.171958	-85.801343
36	Cc	Hidden Dunes, 7101 Thomas Dr	Partial Washout Relocation	12-Jul	UNK	UNK	8	0	30.155070	-85.774440
37	Cc	House, 14000 Front Beach Rd	In Situ	14-Jul	13-Sep	62	81	79	30.200705	-85.851110
38	Cc	House, 7833 Surf Dr	In Situ	14-Jul	19-Sep	68	112	59	30.159467	-85.780881
39	Cm	Edgewater, 11619 Front Beach Rd	In Situ	15-Jul	12-Sep	59	133	123	30.185086	-85.822702
40	Cc	House, 21715 Front Beach Rd	In Situ	15-Jul	16-Sep	63	96	90	30.252712	-85.956253
41	Cc	Emerald Shores, 19504 Front Beach Rd	In Situ	19-Jul	19-Sep	63	126	64	30.239016	-85.925718
42	Cc	Runaway Island Restaurant, 14521 Front Beach Rd	In Situ	25-Jul	25-Sep	63	120	94	30.204087	-85.857325
43	Cc	Hooters, 12705 Front Beach Rd	In Situ	26-Jul	29-Sep	65	90	87	30.192548	-85.836486
44	Cm	House, 14002 Front Beach Rd	In Situ	28-Jul	30-Sep	64	140	131	30.200985	-85.851414
45	Cc	Sunnyside Beach and Tennis Resort, 22400 Front Beach Rd	In Situ	28-Jul	5-Oct	70	98	87	30.256233	-85.964785
46	Cm	House, 14002 Front Beach Rd	In Situ	7-Aug	11-Oct	66	136	127	30.201001	-85.851383

47	Cm	House, 13708 Front Beach Rd	In Situ	18-Aug	3-Nov	77	137	120	30.199700	-85.849125
48	Cc	House, 22001 Front Beach Rd	In Situ	21-Aug	UNK	UNK	87	0	30.254231	-85.959992
49	Cm	Holiday Inn Express, 12907 Front Beach Rd	In Situ	29-Aug	9-Nov	73	143	128	30.194404	-85.839471

Table 2. Sea turtle false crawl locations and crawl dates on Panama City Beach in 2025.  
Cc loggerhead, Cm green

Crawl No	Species	Location	Crawl Date	Latitude	Longitude
1	Cc	Landmark Condo, 17501 Front Beach Rd	15-May	30.22853	-85.90395
2	Cc	Chateau Motel, 12525 Front Beach Rd	18-May	30.19182	-85.83530
3	Cc	En Soliel, 7505 Thomas Dr	20-May	30.15910	-85.78015
4	Cc	Senor Frogs, 15005 Front Beach Rd	24-May	30.20675	-85.86211
5	Cc	House, 520 Beachside Garden, Carillon	26-May	30.26066	-85.97566
6	Cc	House, 352 Beachside Drive, Carillon	26-May	30.26236	-85.97933
7	Cc	House, 8415 Surf Dr	10-Jun	30.16384	-85.78718
8	Cm	Splash Condo, 17737 Front Beach Rd	13-Jun	30.23240	-85.91158
9	Cc	Holiday Inn Express, 12907 Front Beach Rd	17-Jun	30.19442	-85.83984
10	Cc	Harpoon Harry's Restaurant, 12627 Front Beach Rd	17-Jun	30.19235	-85.83628
11	Cc	Moondrifter, 8815 Thomas Dr	22-Jun	30.16897	-85.79601
12	Cc	Fontainebleau Terrace, 14401 Front Beach Rd	29-Jun	30.20234	-85.85411
13	Cc	House, 13315 Oleander Dr	30-Jun	30.19732	-85.84518
14	Cc	House, 13105 Oleander Dr	30-Jun	30.19571	-85.84228
15	Cc	House, 22409 Front Beach Rd	3-Jul	30.25693	-85.96648
16	Cc	Shoreline Villas, 23007 Front Beach Rd	4-Jul	30.25946	-85.97308
17	Cc	House, 8015A Surf Drive	6-Jul	30.16073	-85.78294
18	Cc	House, 21116 Front Beach Rd	6-Jul	30.24939	-85.94846
19	Cc	En Soliel, 7505 Thomas Dr	6-Jul	30.15903	-85.78021
20	Cc	Summerwinds, 6323 Thomas Dr	6-Jul	30.15026	-85.76763
21	Cm	House, 21224 Front Beach Rd	17-Jul	30.25004	-85.95012
22	Cc	Ramsgate Condo, 23011 Front Beach Rd	17-Jul	30.26040	-85.97507
23	Cc	House, 17495 Front Beach Rd	18-Jul	30.22782	-85.90233
24	Cc	Boardwalk Beach Resort, 9450 S. Thomas Dr	24-Jul	30.17154	-85.80071
25	Cm	House, 14206 Front Beach Rd	27-Jul	30.20204	-85.85334
26	Cm	House, 14000 Front Beach Rd	28-Jul	30.20074	-85.85137
27	Cm	House, 13908 Front Beach Rd	28-Jul	30.20076	-85.85120
28	Cm	House, 14202 Front Beach Rd	18-Aug	30.20206	-85.85277
29	Cm	Holiday Inn Express, 12907 Front Beach Rd	29-Aug	30.19421	-85.83939

Table 3. Nest excavation data on Panama City Beach in 2025 (49 evaluated nests, 42 loggerhead, 7 green). Contents are unhatched eggs, live and dead hatchlings found in nest, pipped eggs where hatchling partially broke free of shell, and emerged hatchlings that escaped the nest. Red indicates nest partially washed out with recovered eggs relocated during washout (PWOR). Loggerhead and green minimum and maximum eggs laid.

Nest No	Species	Eggs	Turtles Emerged	Live in Nest	Dead in Nest	Pipped Live	Pipped Dead	Unhatched	Emergence Success	In Situ or Relocated
1	Cc	105	94	2	0	0	0	9	0.90	In Situ
2	Cc	0	0	0	0	0	0	0	0.00	In Situ
3	Cc	83	79	0	0	0	0	4	0.95	In Situ
4	Cc	91	88	0	0	0	0	3	0.97	In Situ
5	Cc	93	85	1	0	0	0	7	0.91	In Situ
6	Cc	96	88	0	0	0	0	8	0.92	In Situ
7	Cc	128	109	1	0	0	0	18	0.85	In Situ
8	Cc	87	83	0	0	0	0	4	0.95	In Situ
9	Cc	97	88	0	0	0	0	9	0.91	In Situ
10	Cc	85	78	0	0	0	0	7	0.92	In Situ
11	Cc	91	87	1	0	0	0	3	0.96	In Situ
12	Cc	148	131	3	0	0	0	14	0.89	In Situ
13	Cc	133	116	0	0	0	0	17	0.87	In Situ
14	Cc	79	77	0	0	0	0	2	0.97	In Situ
15	Cc	116	114	0	0	0	0	2	0.98	Relocated
16	Cc	108	0	0	0	0	0	108	0.00	In Situ
17	Cc	102	2	1	0	0	0	99	0.02	In Situ
18	Cc	92	32	1	0	0	0	59	0.35	In Situ
19	Cc	79	70	1	0	0	0	8	0.89	In Situ
20	Cc	84	0	0	0	0	0	84	0.00	In Situ
21	Cc	122	116	0	0	0	0	6	0.95	In Situ
22	Cc	133	127	0	0	0	0	6	0.95	In Situ
23	Cc	91	89	0	0	0	0	2	0.98	In Situ
24	Cc	90	86	1	0	0	0	3	0.96	In Situ
25	Cc	92	73	1	0	0	1	17	0.79	In Situ
26	Cc	87	38	0	0	0	0	49	0.44	Relocated
27	Cc	103	0	0	0	0	0	103	0.00	In Situ
28	Cc	92	71	0	0	0	0	21	0.77	In Situ
29	Cc	113	60	1	0	0	0	52	0.53	In Situ
30	Cc	92	91	0	0	0	0	1	0.99	In Situ
31	Cm	73	40	0	0	0	0	33	0.55	In Situ
32	Cc	110	95	1	0	0	0	14	0.86	In Situ
33	Cc	110	100	0	0	0	0	10	0.91	In Situ
34	Cm	130	110	1	5	0	0	14	0.85	In Situ
35	Cc	101	97	0	0	0	0	4	0.96	In Situ
36	Cc	8	0	0	0	0	0	8	0.00	In Situ/PWOR
37	Cc	81	79	0	0	0	0	2	0.98	In Situ
38	Cc	112	59	3	1	0	0	49	0.53	In Situ
39	Cm	133	123	0	0	0	0	10	0.92	In Situ
40	Cc	96	90	0	0	0	0	6	0.94	In Situ
41	Cc	126	64	1	0	0	0	61	0.51	In Situ

42	Cc	120	94	0	0	0	0	26	0.78	In Situ
43	Cc	90	87	0	0	0	0	3	0.97	In Situ
44	Cm	140	131	4	0	0	0	5	0.94	In Situ
45	Cc	98	87	0	0	0	0	11	0.89	In Situ
46	Cm	136	127	4	0	0	0	5	0.93	In Situ
47	Cm	137	120	8	0	0	0	9	0.88	In Situ
48	Cc	87	0	0	0	1	0	86	0.00	In Situ
49	Cm	143	128	6	0	0	1	8	0.90	In Situ
<b>TOTAL</b>		<b>4943</b>	<b>3803</b>	<b>42</b>	<b>6</b>	<b>1</b>	<b>2</b>	<b>1089</b>	<b>0.77</b>	

Table 4. Disorientation by sea turtles during nesting attempts on Panama City Beach in 2025.  
Cc loggerhead

Crawl No	Species	Crawl Type	Location	Latitude	Longitude	Date	Light sources
4	Cc	Nest	House, 21511 Front Beach Rd	30.25194	-85.95374	25-May	Urban glow
8	Cc	Nest	Shoreline Villas, 23007 Front Beach Rd	30.25974	-85.97323	30-May	Urban glow
28	Cc	Nest	House, 278 Beachside Dr, Carillon	30.26424	-85.98457	22-Jun	Single family home interior and exterior, Condo/hotel interior and exterior
30	Cc	Nest	House, 13902 Front Beach Rd	30.20037	-85.85053	29-Jun	Streetlights
16	Cc	False Crawl	Shoreline Villas, 23007 Front Beach Rd	30.25946	-85.97308	4-Jul	Urban glow

Table 5. Obstacles encountered by sea turtles during nesting attempts on Panama City Beach in 2025.  
Cc loggerhead

Crawl No	Species	Crawl Type	Location	Latitude	Longitude	Incident Date	Obstacles Encountered
12	Cc	Nest	Moonspinner Condo, 4425 Thomas Dr	30.134163	-85.74687	5-Jun	Vendor beach loungers

Table 6. Sea turtle strandings on Panama City Beach from May to October 2025.  
Cc loggerhead, Cm green, Lk Kemp's ridley

No.	Date	Location	Latitude	Longitude	Species	Shell Length (cm)	Final Disposition
1	7-May	Mariner East Condo, 6211 Thomas Dr.	30.14922	-85.76634	Lk	57.3	NMFS Freezer
2	7-May	Russell-Fields City Pier, 16201 Front Beach Rd	30.21238	-85.8798	Cc	77.2	GWMI rehab
3	9-May	M.B. Miller County Pier, 12213 Front Beach Rd	30.18837	-85.83281	Cc	71.9	GWMI rehab
4	13-May	Russell-Fields City Pier, 16201 Front Beach Rd	30.21225	-85.87978	Lk	64.2	GWMI rehab
5	16-May	Russell-Fields City Pier, 16201 Front Beach Rd	30.21201	-85.87951	Lk	53	GWMI rehab
6	20-May	Russell-Fields City Pier, 16201 Front Beach Rd	30.21576	-85.87899	Cm	30	Buried, off beach
7	21-May	Emerald Isle Beach Resort, 17545 Front Beach Rd	30.22885	-85.90511	Cm	20.3	GWMI rehab
8	22-May	Russell-Fields City Pier, 16201 Front Beach Rd	30.21197	-85.87956	Cc	75.7	GWMI rehab
9	4-Jun	Russell-Fields City Pier, 16201 Front Beach Rd	30.21228	-85.87973	Cc	74	GWMI rehab
10	5-Jun	Russell-Fields City Pier, 16201 Front Beach Rd	30.21237	-85.87957	Cc	76	GWMI rehab
11	7-Jun	Sterling Reef Condo, 12011 Front Beach Rd	30.18811	-85.82964	Cc	67.9	Buried, off beach
12	7-Jun	Russell-Fields City Pier, 16201 Front Beach Rd	30.21196	-85.87954	Cc	72.6	GWMI rehab
13	7-Jun	Russell-Fields City Pier, 16201 Front Beach Rd	30.21391	-85.87852	Cc	71.9	GWMI rehab
14	14-Jun	Club La Vela, 8813 Thomas Dr.	30.16838	-85.79507	Lk	61	NMFS Freezer
15	23-Jun	Gulf Crest Condo, 8715 Surf Dr.	30.16579	-85.79109	Cm	UNK	Buried, off beach
16	28-Jun	Russell-Fields City Pier, 16201 Front Beach Rd	30.21353	-85.87852	Cc	70.4	GWMI rehab

17	1-Jul	Russell-Fields City Pier, 16201 Front Beach Rd	30.21361	-85.8783	Cc	77.8	GWMI rehab
18	4-Jul	Russell-Fields City Pier, 16201 Front Beach Rd	30.21211	-85.87979	Lk	60.9	GWMI rehab
19	14-Jul	Russell-Fields City Pier, 16201 Front Beach Rd	30.21397	-85.87853	Cc	102.9	GWMI rehab
20	19-Jul	M.B. Miller County Pier, 12213 Front Beach Rd	30.18743	-85.83314	Cc	68.4	GWMI rehab
21	1-Aug	Russell-Fields City Pier, 16201 Front Beach Rd	30.21231	-85.87939	Cc	75.6	GWMI rehab
22	12-Aug	Ocean Towers Condo, 11211 Front Beach Rd	30.18301	-85.82011	Cm	51.8	Buried, off beach
23	16-Aug	House, 5905 Gulf Dr.	30.14521	-85.7637	Lk	55.8	GWMI rehab
24	27-Aug	Russell-Fields City Pier, 16201 Front Beach Rd	30.21222	-85.87975	Lk	65	GWMI rehab
25	8-Sep	Russell-Fields City Pier, 16201 Front Beach Rd	30.21296	-85.87905	Cc	73.6	GWMI rehab
26	17-Sep	Russell-Fields City Pier, 16201 Front Beach Rd	30.21228	-85.87973	Cc	68.6	GWMI rehab
27	23-Oct	M.B. Miller County Pier, 12213 Front Beach Rd	30.18656	-85.834	Cc	62.5	GWMI rehab
28	25-Oct	Russell-Fields City Pier, 16201 Front Beach Rd	30.21243	-85.87941	Lk	60.3	GWMI rehab
29	28-Oct	M.B. Miller County Pier, 12213 Front Beach Rd	30.1866	-85.83406	Lk	62.3	GWMI rehab